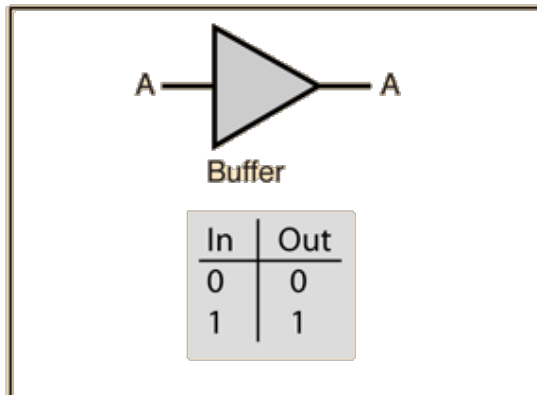


## Buffer



The buffer is a single-input device which has a gain of 1, mirroring the input at the output. It has value for impedance matching and for isolation of the input and output.

[How do you make one?](#)

[Basic Gates](#)

[HyperPhysics](#)\*\*\*\*\*[Electricity and magnetism](#)

*R Nave*

[Index](#)

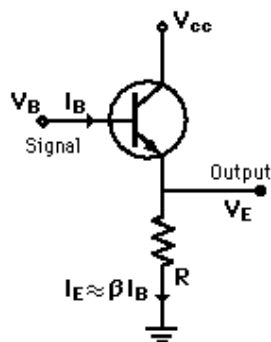
[Electronics concepts](#)

[Digital Circuits](#)

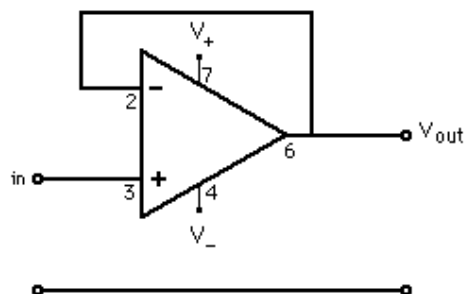
[Go Back](#)

## Making a Buffer

The basic [emitter follower](#) can be used as a [buffer](#).



An op-amp [voltage follower](#) can serve as a buffer.



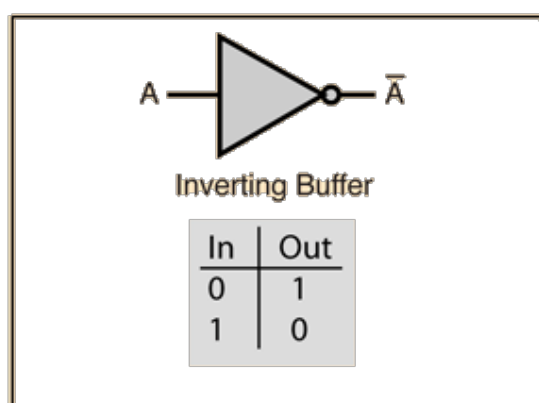
[Basic Gates](#)

[Index](#)

[Electronics concepts](#)

[Digital Circuits](#)

## Inverting Buffer



The inverting buffer is a single-input device which produces the state opposite the input. If the input is high, the output is low and vice versa.

This device is commonly referred to as just an inverter.

[How do you make one?](#)

[IC7404 hex inverter](#)

[Basic Gates](#)

[Index](#)

[Electronics concepts](#)

[Digital Circuits](#)

## Making an Inverting Buffer

A [transistor switch](#) with collector resistor can serve as

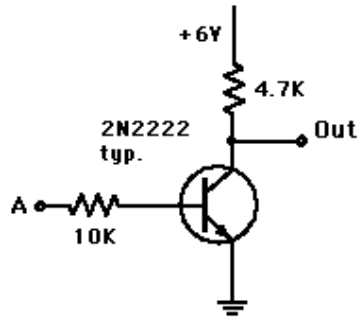
An op-amp [inverting amplifier](#) with a gain of one serves as an

[Index](#)

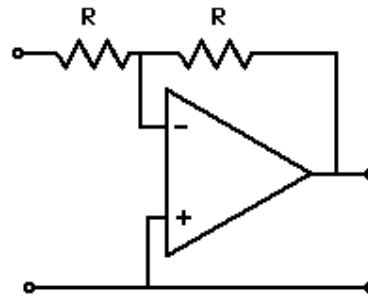
[Electronics concepts](#)

[Digital](#)

an [inverting buffer](#).



inverting buffer.



[Basic Gates](#)

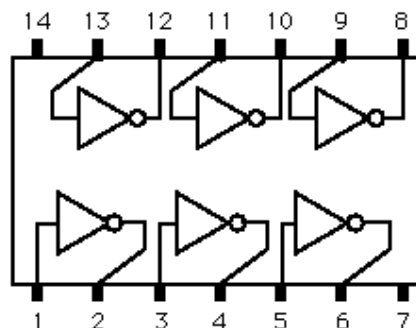
[Circuits](#)

[HyperPhysics](#)\*\*\*\*\*[Electricity and magnetism](#)

*R Nave*

[Go Back](#)

## IC 7404 Inverting Buffers



The 7404, 74H04, 74S04, 74S04A, 74LS04 share this geometry and function. There are a number of other variations on inverter chips.

[Index](#)

[Electronics concepts](#)

[Digital Circuits](#)

<table><tr><td><a href="#">Basic Gates</a></td><td><a href="#">Inverting buffer</a></td></tr></table>		<a href="#">Basic Gates</a>	<a href="#">Inverting buffer</a>	
<a href="#">Basic Gates</a>	<a href="#">Inverting buffer</a>			
<a href="#">HyperPhysics</a> ***** <a href="#">Electricity and magnetism</a>		<a href="#">Go Back</a>		

*R Nave*